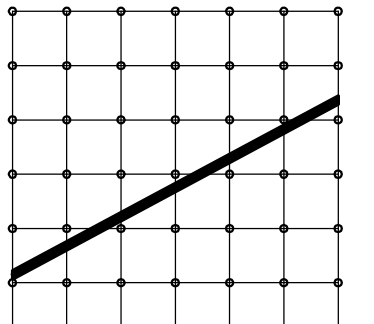
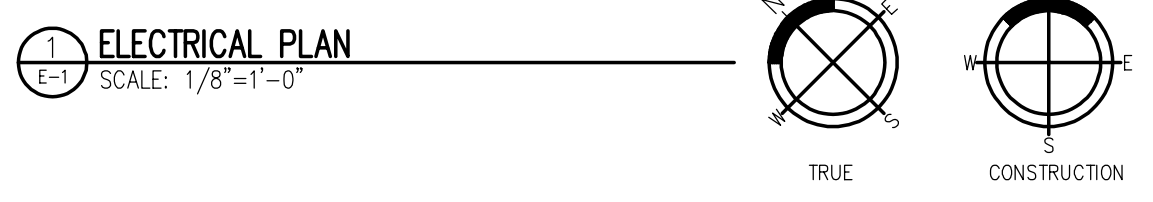


- GENERAL NOTES**
1. IN EXPOSED JOIST AREAS, INSTALL SURFACE MOUNTED FIXTURES TIGHT TO JOISTS UNLESS OTHERWISE NOTED. ADJUST FIXTURE LOCATIONS AS REQUIRED TO MATCH JOISTS.
 2. FURNISH AND INSTALL LIGHTING TRACK IN LOCATIONS SHOWN. PROVIDE LIGHTER "ADVENT" BRIDG STAKES TO CIRCUIT TRACK. FOR BRACK, USE STB FIELD TO PROVIDE POWER TO TRACK. PROVIDE ALL FITTINGS AND ACCESSORIES REQUIRED FOR A COMPLETE TRACK SYSTEM.
 3. CONNECT ONE LAMP OF 3-LAMP NIGHT/EMERGENCY LIGHTING FIXTURES TO NORMAL LIGHTING CIRCUIT. CONNECT OTHER LAMP TO NIGHT/EMERGENCY CIRCUIT. HI/1 AND EMERGENCY BALLAST.
 4. CONNECT OUTBOARD LAMP OF 3-LAMP NIGHT/EMERGENCY LIGHTING FIXTURES TO NORMAL LIGHTING CIRCUIT. CONNECT CENTER LAMP TO NIGHT/EMERGENCY CIRCUIT. HI/1 AND EMERGENCY BALLAST.
 5. CONNECT OUTBOARD LAMP AND ONE INBOARD LAMP OF 4-LAMP NIGHT/EMERGENCY LIGHTING FIXTURES TO NORMAL LIGHTING CIRCUIT. CONNECT OTHER CENTER LAMP TO NIGHT/EMERGENCY CIRCUIT. HI/1 AND EMERGENCY BALLAST.
 6. MOUNT FIXTURES IN GREENHOUSE TO BOTTOM OF ROOF TRUSSES USING UNISTRUT OR EQUAL AS REQUIRED TO SPAN TRUSSES. VERIFY FIXTURE LOCATIONS WITH OWNER REPRESENTATIVE. LOCATIONS AND TRACK LENGTHS. VERIFY ALL DIMENSIONS WITH OWNER REPRESENTATIVE.
 7. PROVIDE ALTERNATE PAGING TO OWNER FOR (A) A COMPLETE LIGHTING INSTALLATION INCLUDING TRACK BUT EXCLUDING FIXTURES AND POLES AND (B) A COMPLETE LIGHTING INSTALLATION INCLUDING FIXTURES AND POLES. VERIFY ALTERNATE PAGING REQUIREMENTS WITH OWNER.

- KEYED NOTES**
1. PROVIDE JUNCTION BOX AND CIRCUIT FOR SIGNAGE. MAKE FINAL ELECTRICAL CONNECTIONS TO SIGNAGE. VERIFY LOCATION AND CIRCUIT REQUIREMENTS WITH SIGNAGE CONTRACTOR.
 2. VIA CONTRACTOR "A". SEE SHEET E-5.
 3. VIA CONTRACTOR "B". SEE SHEET E-5.
 4. VIA CONTRACTOR "C". SEE SHEET E-5.
 5. 1/2" TYPE "23" MOUNTED VERTICALLY IN DISPLAY CASE. SEE INTERIOR DESIGN DRAWINGS FOR DETAILS.



**Cluts
O'Brien
Strother
ARCHITECTS**

7520 MARKET PLACE DRIVE
EDEN PRAIRIE, MN 55344
(612)941-4422
FAX 941-5462

I HEREBY CERTIFY THAT THIS PLAN, SPECIFICATION, OR REPORT WAS PREPARED BY ME OR UNDER MY DIRECT SUPERVISION AND THAT I AM A LICENSED PROFESSIONAL ENGINEER UNDER THE LAWS OF THE STATE OF MINNESOTA.

DATE: 8/16/93

EXE ASSOCIATES, INC.
1000 UNIVERSITY AVENUE, SUITE 200
EDEN PRAIRIE, MN 55344
PHONE: (612) 948-8740 FAX: 948-8800

ISSUE DATA
DATE: 8/16/93

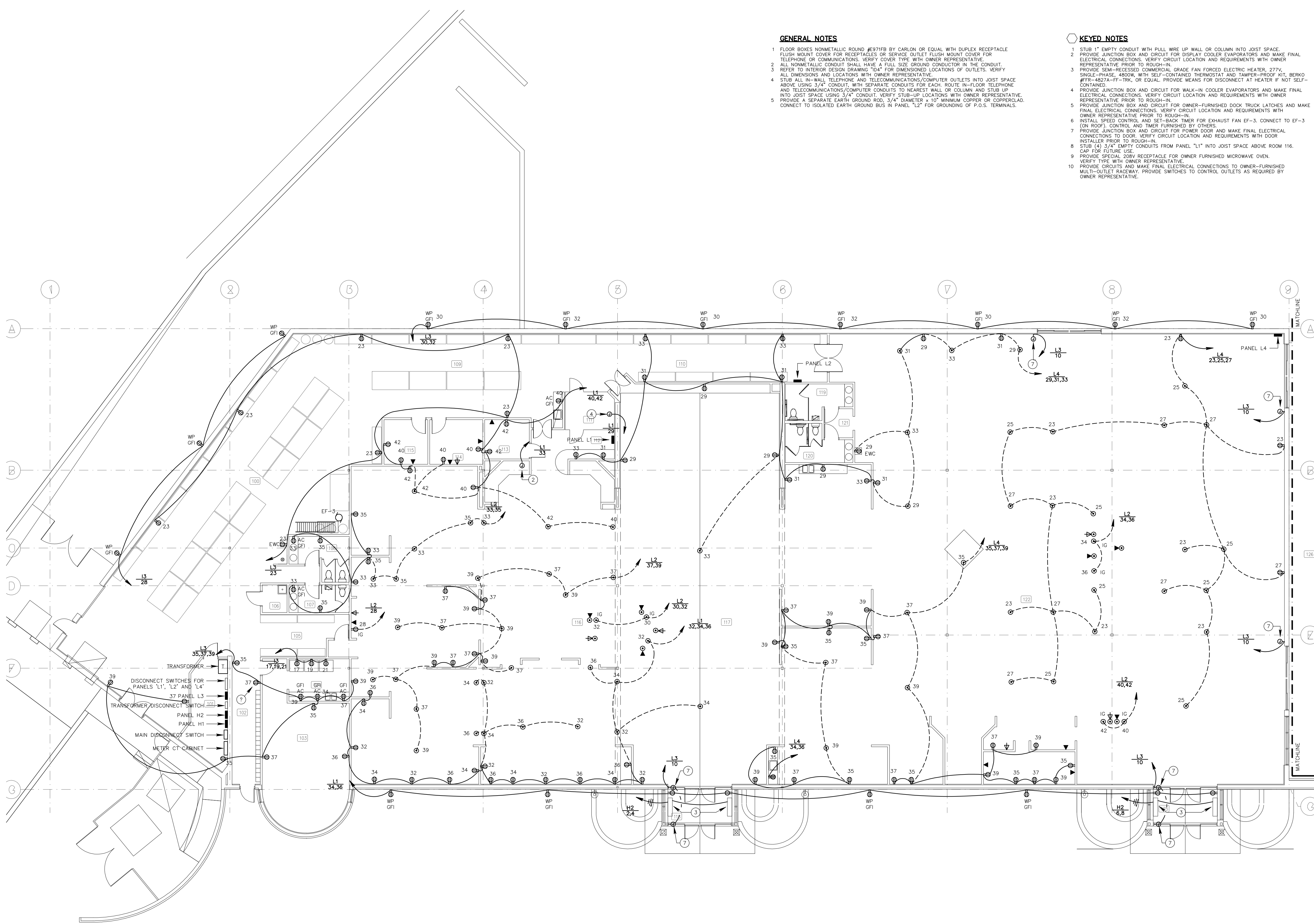
BACHMANS
EDEN PRAIRIE
MARKETCENTER

**ELECTRICAL LIGHTING
PLAN**

COPYRIGHT 1993

COMMISSION NO. 40330
FILE NO. 40330E1.DWG-04

SHEET NO.
E-1
OF



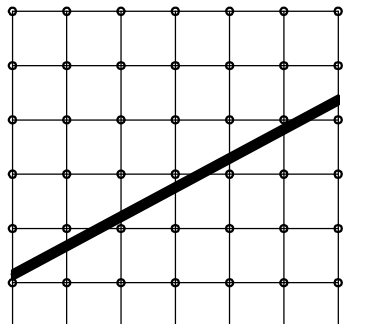
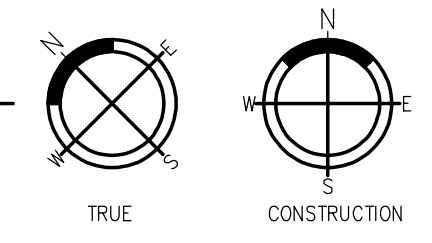
GENERAL NOTES

- FLOOR BOXES NONMETALLIC ROUNDED JESTER BY CARLON OR EQUAL WITH DUPLEX RECEPTACLE FLOOR MOUNT COVER FOR RECEPTABLES OR SERVICE OUTLET FLOOR MOUNT COVER FOR TELEPHONE OR COMMUNICATIONS. VERIFY COVER TYPE WITH OWNER REPRESENTATIVE.
- ALL NONMETALLIC CONDUIT SHALL HAVE A FULL SIZE GROUND CONDUCTOR IN THE CONDUIT. REFER TO INTERIOR DESIGN DRAWING "IDA" FOR DIMENSIONED LOCATIONS OF OUTLETS. VERIFY ALL DIMENSIONS AND LOCATIONS WITH OWNER REPRESENTATIVE.
- STUB ALL IN-WALL TELEPHONE AND TELECOMMUNICATIONS/COMPUTER OUTLETS INTO JOIST SPACE ABOVE USING 3/4" CONDUIT. WITH SEPARATE CONDUITS FOR EACH ROUTE. IN-FLOOR TELEPHONE AND TELECOMMUNICATIONS/COMPUTER CONDUITS TO REMAIN WALL OR COLUMN AND STUB UP INTO JOIST SPACE USING 3/4" CONDUIT. VERIFY STUB-UP LOCATIONS WITH OWNER REPRESENTATIVE. PROVIDE A SEPARATE EARTH GROUND RIG, 3/4" DIAMETER x 12" MINIMUM CORNER OR CORNERLUG. CONNECT TO ISOLATED EARTH GROUND BUS IN PANEL "L2" FOR GROUNDING OF P.O.S. TERMINALS.

KEYED NOTES

- STUB 1" EMPTY CONDUIT WITH PULL WIRE UP WALL OR COLUMN INTO JOIST SPACE.
- PROVIDE JUNCTION BOX AND CIRCUIT FOR DISPLAY COOLER EVAPORATORS AND MAKE FINAL ELECTRICAL CONNECTIONS. VERIFY CIRCUIT LOCATION AND REQUIREMENTS WITH OWNER REPRESENTATIVE. PRIOR TO ROUGH-IN. PROVIDE THERMOSTAT AND TAMB-PROOF ATL BEMKO #170-4827A-FY-TK, OR EQUAL. PROVIDE MEANS FOR DISCONNECT AT HEATER IF NOT SELF-CONTAINED.
- PROVIDE SEMI-RECESSED COMMERCIAL GRADE FAN FORCED ELECTRIC HEATER, 277V, SINGLE-PHASE, 480W, WITH SELF-CONTAINED THERMOSTAT AND TAMB-PROOF ATL BEMKO #170-4827A-FY-TK, OR EQUAL. PROVIDE MEANS FOR DISCONNECT AT HEATER IF NOT SELF-CONTAINED.
- PROVIDE JUNCTION BOX AND CIRCUIT FOR MAIL-IN COOLER EVAPORATORS AND MAKE FINAL ELECTRICAL CONNECTIONS. VERIFY CIRCUIT LOCATION AND REQUIREMENTS WITH OWNER REPRESENTATIVE. PRIOR TO ROUGH-IN.
- PROVIDE JUNCTION BOX AND CIRCUIT FOR OWNER-FURNISHED DOCK TRUCK LATCHES AND MAKE FINAL ELECTRICAL CONNECTIONS. VERIFY CIRCUIT LOCATION AND REQUIREMENTS WITH OWNER REPRESENTATIVE. PRIOR TO ROUGH-IN.
- INSTALL SPEED CONTROL AND SET-BACK TIMER FOR EXHAUST FAN EF-3. CONNECT TO EF-3 (ON ROOF). CONTROL AND TIMER FURNISHED BY OTHERS.
- PROVIDE JUNCTION BOX AND CIRCUIT FOR POWER DOOR AND MAKE FINAL ELECTRICAL CONNECTIONS TO DOOR. VERIFY CIRCUIT LOCATION AND REQUIREMENTS WITH DOOR INSTALLER PRIOR TO ROUGH-IN.
- STUB 1" 3/4" EMPTY CONDUITS FROM PANEL "L1" INTO JOIST SPACE ABOVE ROOM 116. CAP FOR FUTURE USE.
- PROVIDE SPECIAL 200V RECEPTACLE FOR OWNER FURNISHED MICROWAVE OVEN. VERIFY TYPE WITH OWNER REPRESENTATIVE.
- PROVIDE CIRCUITS AND MAKE FINAL ELECTRICAL CONNECTIONS TO OWNER-FURNISHED MULTI-OUTLET RACEWAY. PROVIDE SWITCHES TO CONTROL OUTLETS AS REQUIRED BY OWNER REPRESENTATIVE.

ELECTRICAL PLAN
SCALE: 1/8"=1'-0"



**Cluts
O'Brien
Strother
ARCHITECTS**

7520 MARKET PLACE DRIVE
EDEN PRAIRIE, MN 55344
(612)941-4422
FAX 941-5462

I HEREBY CERTIFY THAT THIS PLAN, SPECIFICATIONS OR REPORT WAS PREPARED BY ME OR UNDER MY DIRECT SUPERVISION AND THAT I AM A LICENSED REGISTERED PROFESSIONAL ENGINEER UNDER THE LAWS OF THE STATE OF MINNESOTA.

EXE ASSOCIATES, INC.
7520 MARKET PLACE DRIVE
EDEN PRAIRIE, MN 55344
(612)941-4422
FAX 941-5462

ISSUE DATA
DATE: 8/16/93

BACHMANS
EDEN PRAIRIE
MARKETCENTER

**ELECTRICAL
POWER
PLAN**

COPYRIGHT 1993

COMMISSION NO. 40230
FILE NO. 40030227-00-04

SHEET NO.
E-2
OF

